

# CERTIFICATE OF LOCATION OF GOVERNMENT CORNER

NORTHEAST Corner of Section 18, Township 105, Range 43, 5TH P.M.

STATE OF MINNESOTA, County of MURRAY

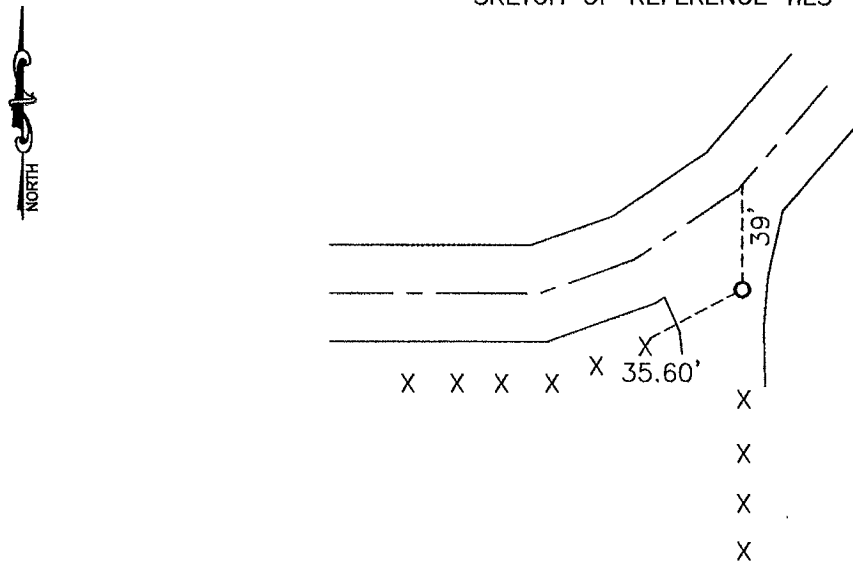
At the corner location shown on the sketch:

On \_\_\_\_\_ found a \_\_\_\_\_

left monument as found,  lowered monument,  removed monument (explain)

On 10-21-2008 placed a 1" PIPE WITH SEAL #43844

### SKETCH OF REFERENCE TIES



Minnesota State Plane Coordinate System Murray County Datum NAD83 (1996)

N: 121725.286  
E: 426870.168

Nail and seal in top of end post WSW 35.60'

Statement of evidence relative to this corner location is on back of page.

I hereby certify that this document and the data contained herein was prepared by me or under my direct supervision.

James V. Johnson 3/5/09  
SIGNATURE DATE

Registration No. 43844

Land Surveyor,  Professional Engineer  
 County Surveyor,  County Engineer

OFFICE OF THE COUNTY RECORDER  
County of

I hereby certify that this document was filed in the Co. Recorders office at \_\_\_\_\_ .M on the \_\_\_\_\_ day of \_\_\_\_\_ A.D. 20 \_\_\_\_\_

County Recorder James V. Johnson  
By \_\_\_\_\_, Deputy

DOCUMENT NO. JUL 10 2009

## Statement of Evidence

In 1866, J. W. Bishop did the original subdivision of the township.

On June 28, 1911, the corner was recorded at 2 charred stakes and a mound and 4 pits.

On the Highway plans for County Road #4 the corner is recorded as being 39' south of the centerline of the highway.

On October 21, 2008, Bueltel-Moseng Land Surveying set a 1" pipe with seal #43844 39 feet south of the centerline of County Road #4, as the highway plans called for, and in line with the fence to the south and the centerline of County Road #4 to the west. We did not dig because of a large culvert underneath the area.